



# **INSTRUCTIONS & PARTS LIST FOR 1309 AIR JIG SAW**

## **AIR SUPPLY**

The efficiency and life of this tool depend on the proper supply of clean, dry, lubricated air at about 90 lbs. P.S.I., although higher or lower pressures may be used. The use of an air line filter, pressure regulator and lubricator is recommended.

Before connecting the tool, blow the air line to remove water and dirt which may have accumulated. This is especially important for a new line or when the line has not been used for some time.

## **HOSE AND HOSE CONNECTION**

The air supply hose is 3/8" I.D. If extension hose is necessary, use 1/2" hose, with couplings not less than 3/8" I.D.

## **LUBRICATION**

An oil supply to the air motor is important. SIOUX air line lubricators are recommended. Adjust to deliver 2 drops of SIOUX Air Motor Oil No. 288 per minute. When air line lubricator is not used, place 10-15 drops of SIOUX No. 288 oil into the air inlet twice daily.

If saw head had been disassembled for service, use SIOUX #1198 Grease (1 oz.) when assembling and coat all internal parts with grease.

## **OPERATION OF THE AIR POWER UNIT**

The tool is equipped with a speed control located in the housing on the opposite side of the lever. The speed control is turned by using the Allen Wrench (4mm or 5/32") supplied with the saw.

## **OPERATION OF THE SAW HEAD**

The jig saw has a stroke length of 1" and the cutting capacity is as follows: Wood—2 3/8", Steel—1/4", Soft Metal—3/4", Hard Aluminum—3/8" and Ceramic—3/8".

See the placard on the side of the saw head for orbital setting for various materials. Use "0" setting when plunge cutting.

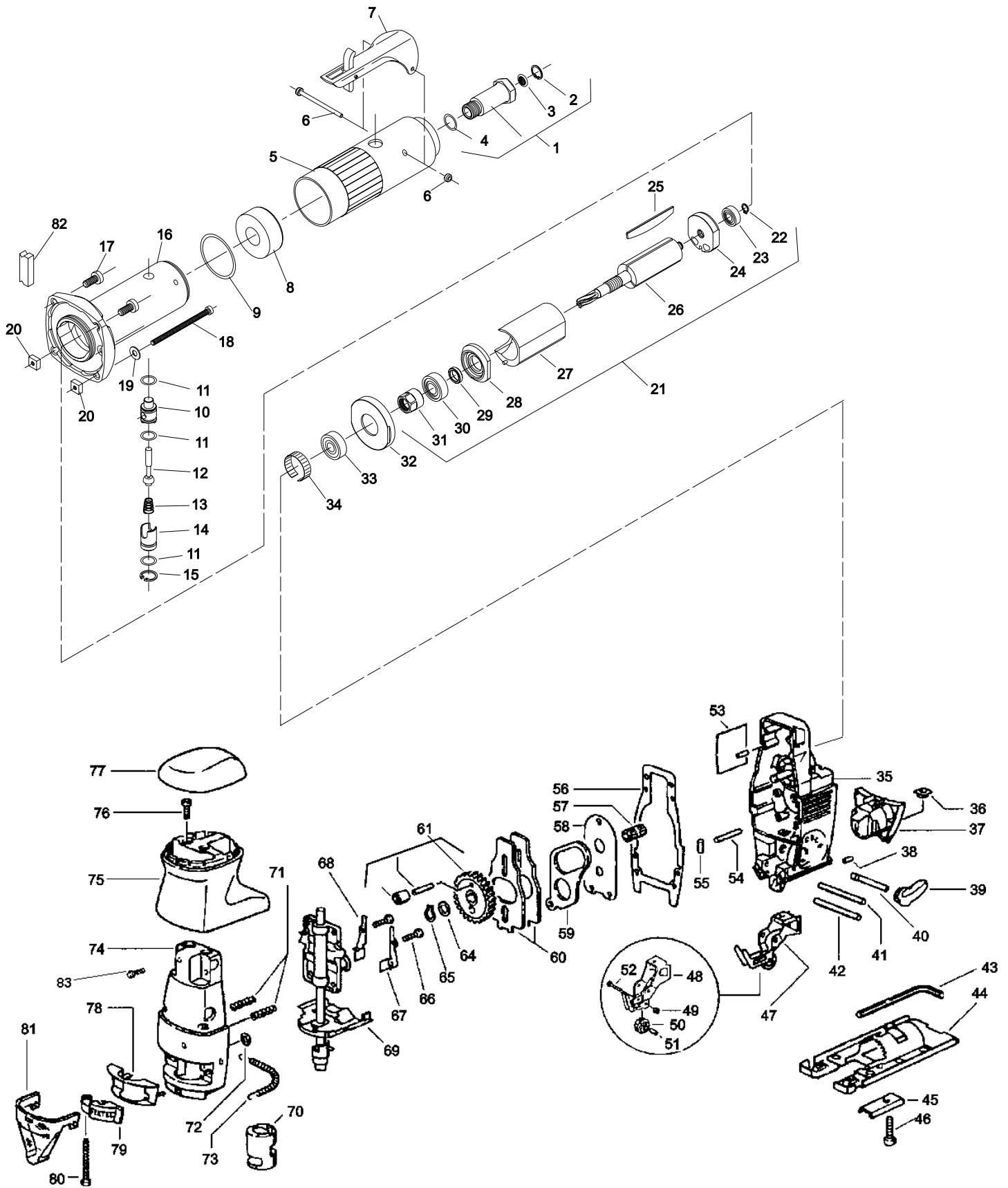
When inserting the saw blade, be sure the blade is properly seated in the support roller. To insert or remove a blade, lift the blade release lever at the front of the head. Use only blades approved for use in Fixtec saws.

Important: The support roller and holder should be oiled periodically.

# **SIoux TOOLS INC.**

2901 FLOYD BOULEVARD ■ PO BOX 507 ■ SIOUX CITY, IOWA 51102-0507 USA ■

Printed In U.S.A.



# PARTS LIST FOR 1309 AIR JIG SAW

Fig. No.	Part No.	Description	Fig. No.	Part No.	Description
1.	54837	Adapter—Inlet	45.	72451	Thrust Piece
2.	21541	Ring—Retaining	46.	66929	Screw—Cap
3.	30463	Screen	47.	66926	Collar—Supporting Ass'y (Includes Figs. 48-52)
4.	14312	Ring—"O"	48.	66904	Support
5.	14193	Cover—Housing	49.	66907	Nut
6.	66344	Ass'y—Pin	50.	66912	Roller—Collar
7.	63258	Lever—Ass'y	51.	66923	Bushing
8.	40116	Material—Silencing	52.	66894	Screw
9.	14333	Ring—"O"	53.	66910	Decal
10.	64198	Body—Valve	54.	66932	Pin
11.	14290	Ring—"O" (3*)	55.	66908	Plug
12.	63241	Ass'y—Valve	56.	66913	Gasket
13.	21401	Spring	57.	66911	Bearing
14.	64199	Valve—Speed Control	58.	66915	Plate
15.	21795	Ring—Retaining	59.	66897	Arm—Rocker
16.	66799	Housing and Flange	60.	66896	Plate—Balance (2*)
17.	07633	Screw (2*)	61.	66895	Ass'y—Gear
18.	06610	Screw (2*)	64.	66931	Washer
19.	35234	Washer (2*)	65.	66928	Ring—Retaining
20.	66881	Nut	66.	66935	Screw (2*)
21.	66807	Ass'y—Motor	67.	66920	Retainer
22.	21491	Ring—Retaining	68.	66919	Retainer
23.	10253	Bearing—Ball	69.	66924	Ass'y—Plunger
24.	10552	End Plate—Rear	70.	66905	Collar
25.	63527	Vane (Set of 3)	71.	66921	Spring (2*)
26.	66798	Rotor	72.	66922	Washer
27.	64057	Cylinder	73.	66916	Spring
28.	64059	End Plate—Front	74.	66903	Cover—Gear Housing
29.	44488	Spacer	75.	66901	Base—Handle
30.	10257	Bearing—Ball	76.	66935	Screw (2*)
31.	68034	Nut	77.	66902	Cover—Handle
32.	64201	Retainer—Motor	78.	66900	Bracket
33.	10259	Bearing	79.	66906	Lever
34.	64194	Ring—Tolerance	80.	66934	Screw
35.	66937	Case—Gear (Includes Figs. 36-42, 47, 53, 54)	81.	66917	Guard—Blade
36.	66909	Retainer	82.	66883	Plug
37.	66899	Bracket—Air Nozzle	83.	68390	Screw
38.	66930	Pin—Dowel			
39.	66914	Lever			
40.	66898	Shaft—Cam			
41.	72419	Pin—Dowel			
42.	66925	Rod			
43.	72441	Key			
44.	72450	Plate—Grounding			

Not Shown:	
66882	Nameplate
72440	Guard—Anti-splinter
1376	Hose—Leader
63355	Hose—Exhaust
67790	Shoe—Cover

'X' Option Remote Exhaust

\*Order Quantity As Required

**FURNISH CATALOG, SERIAL, AND MODEL NUMBER  
WHEN ORDERING PARTS**



# GENERAL SAFETY INSTRUCTIONS FOR AIR TOOLS

1. **KEEP WORK AREA CLEAN:** Cluttered areas and benches invite accidents.
2. **AVOID DANGEROUS ENVIRONMENT:** Keep work-area well lit,
3. **KEEP CHILDREN AWAY:** All visitors should be kept safe distance from work area.
4. **STORE IDLE TOOLS:** When not in use, tools should be stored in dry, high or locked-up place-out of reach of children.
5. **DON'T FORCE TOOL:** It will work best and safest at the designed rate.
6. **RIGHT TOOL USE:** Don't force small tool to do the job of a heavy-duty tool.
7. **WEAR PROPER APPAREL:** No loose clothing or jewelry to get caught in moving parts.
8. **USE SAFETY GLASSES:** Use safety glasses with most tools. Also face or dust mask if it is a cutting operation.
9. **SECURE WORK:** Use clamps or vise to hold work. It's safer than using your hand and it allows freedom of both hands to hold tool.
10. **DON'T OVERREACH:** Keep proper footing and balance at all times.
11. **MAINTAIN TOOLS WITH CARE:** Keep tools sharp and clean for best and safest performance. Follow instructions for lubricating and changing accessories.
12. **DISCONNECT TOOLS:** When not in use: before servicing; when changing accessories such as blades, bits, cutter, etc.
13. **REMOVE ADJUSTING KEYS AND WRENCHES:** Form habit of checking to see that keys and adjusting wrenches are removed from tool before turning it on.
14. **CAUTION:** The use of an accessory with this tool not provided or specified by SIOUX TOOLS may be hazardous.

**SIoux  
TOOLS INC.**

2901 FLOYD BOULEVARD ■ PO BOX 507 ■ SIOUX CITY, IOWA 51102-0507 USA ■

Printed In U.S.A.